



# Study Tour Macro Level 01.-17.10.2015

Similarities and Differences,  
good practice examples and philosophy  
from German to Mongolian Labour Market  
System



Svenja Rehse M.A.





As a federal enterprise, GIZ supports the German Government in achieving its objectives in the field of international cooperation for sustainable development.

Published by  
Deutsche Gesellschaft für  
Internationale Zusammenarbeit (GIZ) GmbH

Registered offices, Bonn and Eschborn, Germany

“Cooperative Vocational Training in the Mineral  
Resource Sector Program (CVT)”

Labour Palace Office Building – 6th floor  
Chinggis Avenue, 2nd khoroo, Khan-Uul District  
P.O.B. 1264 Ulaanbaatar 14251,  
Mongolia

T: +976 7000 5340

F : +976 7000 5341



ХӨДӨЛМӨРИЙН ЯАМ

### Responsible

Jürgen Hartwig (Ph.D)

### Author

Svenja Rehse

### Photo credits

Agentur fuer Arbeit Germany

Agentur fuer Arbeit Halle

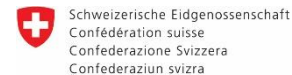
Homepage [www.arbeitsagentur.de](http://www.arbeitsagentur.de)

[Svenja.Rehse@cimonline.de](mailto:Svenja.Rehse@cimonline.de)

### Layout

Svenja Rehse

In cooperation with



Schweizerische Eidgenossenschaft  
Confédération suisse  
Confederazione Svizzera  
Confederaziun svizra

Swiss Agency for Development  
and Cooperation SDC  
Швейцарийн хөгжлийн агентлаг



# Labour Administration Challenges



# Das System der sozialen Sicherung in Deutschland

Krankenversicherung

1883

Rentenversicherung

1889

Unfallversicherung

1884

Arbeitslosenversicherung

1927

Pflegeversicherung

1995

# BA - Organization

## National Level

- **1 Head Office** in Nuremberg

## Regional Level

- **10 Regional Directorates**

## Local Level

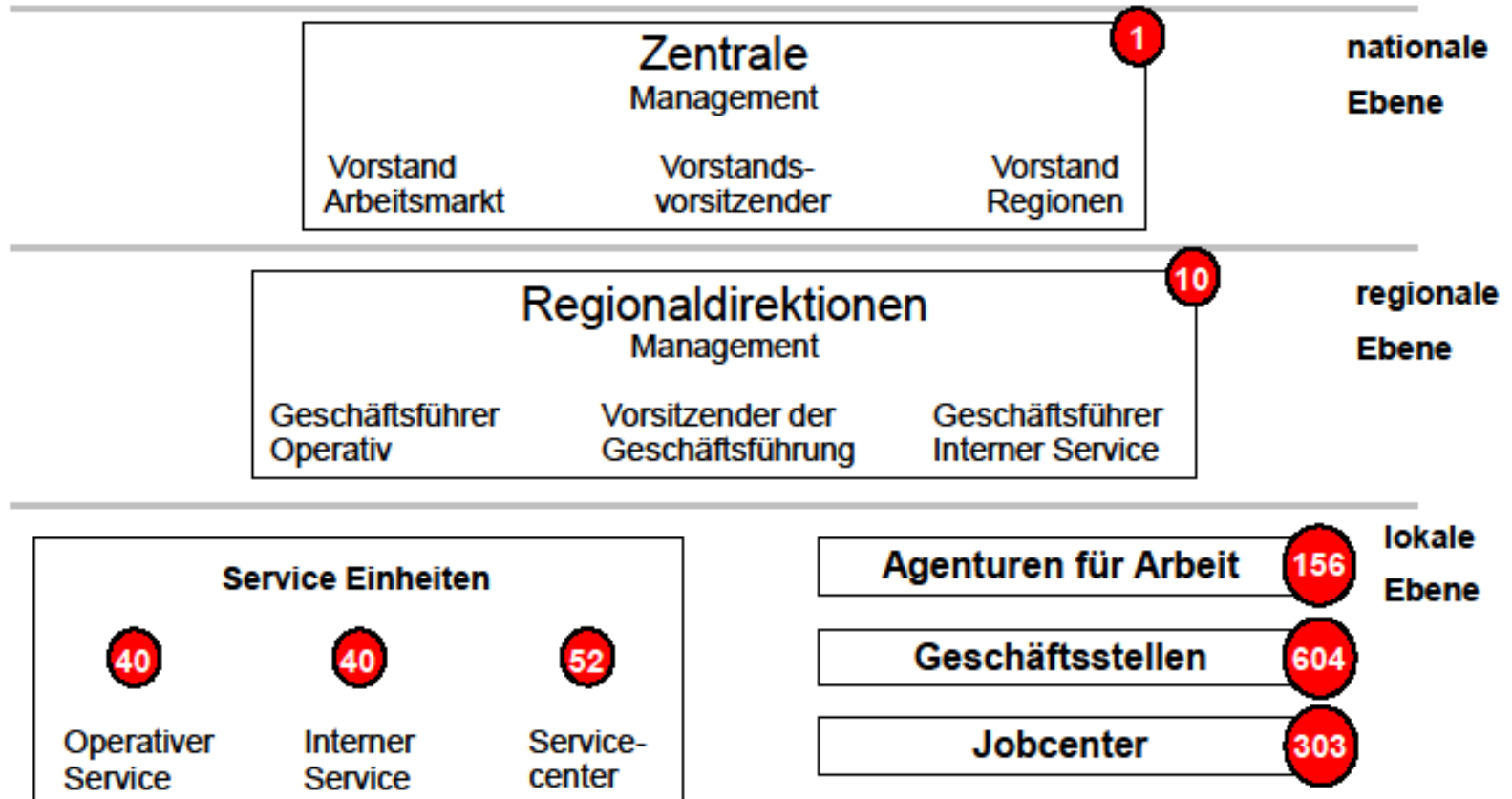
- **156 Employment Agencies** with full service
- **604 Branch Offices** in small towns/rural areas
- **303 Jobcenter** (Agencies and County) cooperatively responsible for long time unemployed/families



Organizational Structure



## Bundesministerium für Arbeit und Soziales



# Special BA-Agencies and Service Units

→ Maintenance, Education, Support for Professional BA-Workforce

- Institute for Employment Research (IAB)
- International Placement Service (ZAV)
- Staff College (FBA)
- University (HdBA) with two locations
  
- IT System House: BA Information Technology
- Service House : HR Service Provider of the BA
- Family Benefits Office

# Qualification of Career Counselors



The University of Applied Labour Studies of the Federal Employment Agency was founded in 2006. Since then it has offered two degrees at both of its campus locations in Mannheim and Schwerin:

- Labor Market Management, Bachelor of Arts
- Career Guidance and Case Management, Bachelor of Arts (only in Mannheim)

During their course of study, the students are in a temporary employment relationship to the Federal Employment Agency.

Alongside, the tasks of the university include further education for the employees of the Federal Employment Agency as well as research into labour market related issues.



# Contact

**Svenja Rehse**

Vocational Counselling and Guidance Expert  
National Employment Research and Information  
Center (NESRIC)

[Svenja.Rehse@cimonline.de](mailto:Svenja.Rehse@cimonline.de)

Mobile: 89904779

**Thank you for your attention!**  
**Questions?**